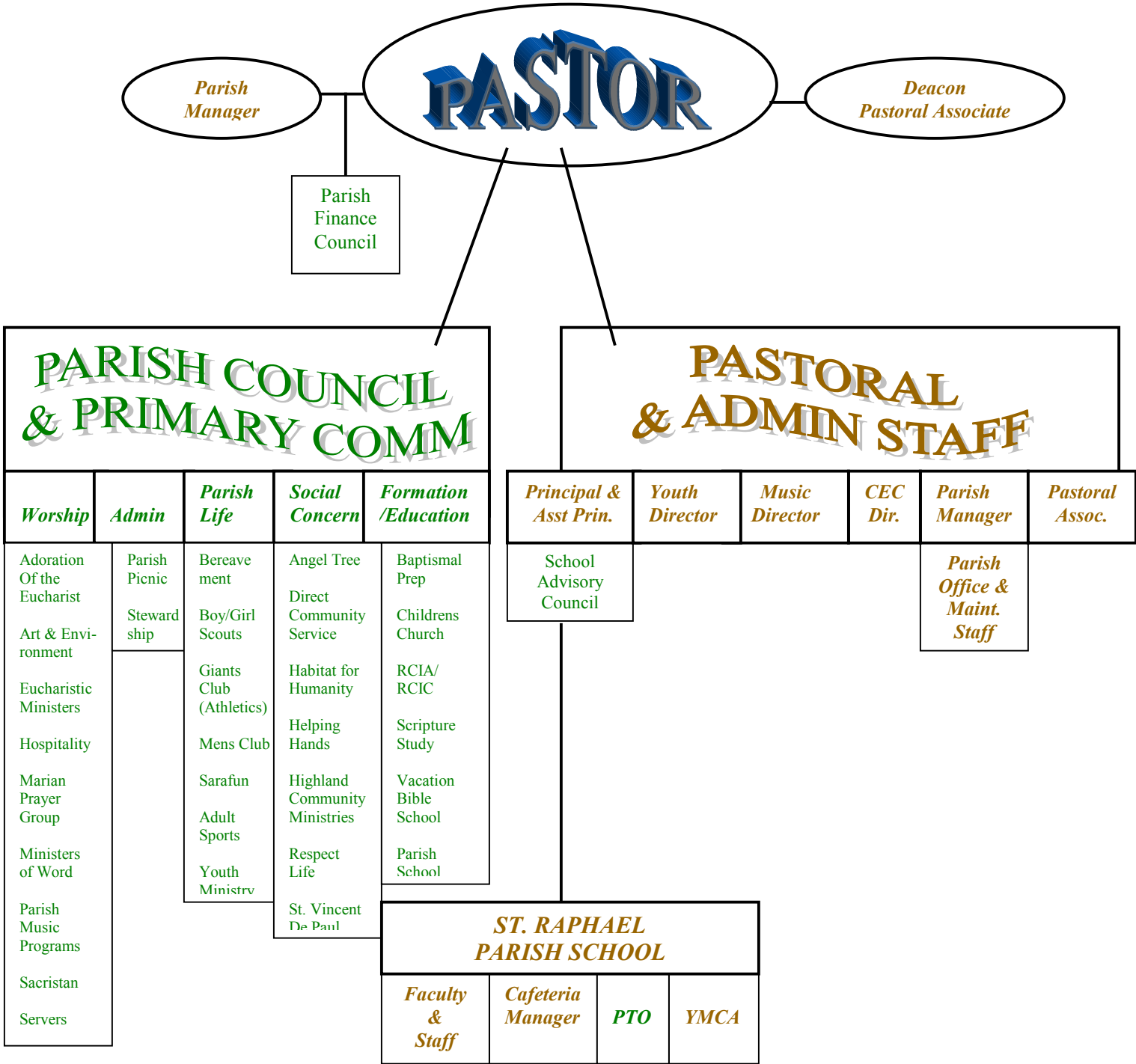


Parish or School Volunteers

Employees or sub contracted



We are publishing this organizational flowchart as part of an ongoing commitment toward improving communication in the Parish. This was one of a number of suggestions made during the Parish Pastoral Council Retreat in August. We hope this helps parishioners to see the structure in which we operate and better understand the lines of communication.

Some activities which fall organizationally under the five primary committees of the Parish Council may be directed by members of the pastoral or administrative staff rather than volunteers. Some activities or organizations are recognized within the parish structure but operate separately from the parish.